

NEW PARAMAX[®] DIGESTER SERIES

Paramax[®] YVD065P3DG

Our new Paramax[®] Digester Series - YVD065P3DG, is packed with various essential features upgraded and improved to meet existing application demands. This new addition to our YHD series for the POM industry is an excellent choice if you are seeking any of the following benefits.

Full Benefits

- 100% Leak Proof - Drywell, prevents Palm Oil Contamination
- 20% Higher torque than YVD060
- Split housing for easy maintenance (YVD065)
- Long lasting gearbox
- 10 years bearing lifetime*
- SF1:66 at 55kW full load start
- 65% Lubrication oil cost saving
- Lower operating temperature
- Low maintenance cost
- 100% Japan bearings



100% Leak Proof - Drywell

0% Palm Oil contamination from digester gearbox



Long Lasting Operation

Increased 20% torque with estimated 10 years bearing life at 55kW operation (365 days x 12hrs)*



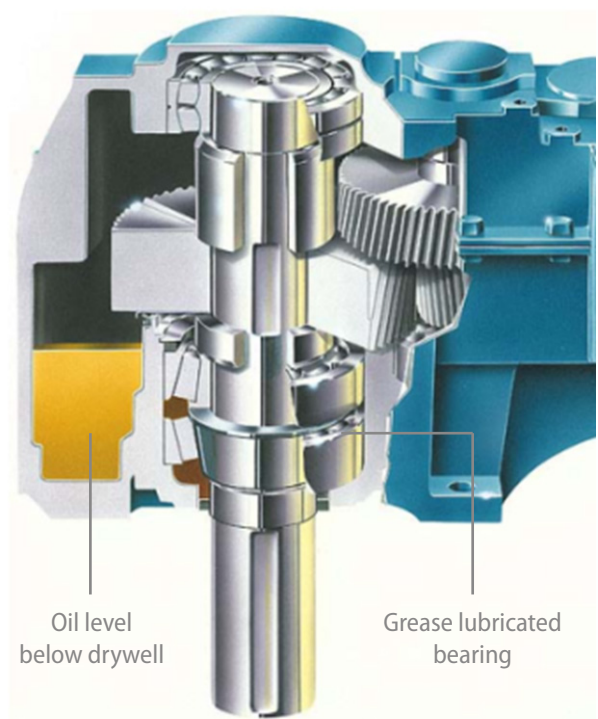
55kW Full Load Start

The highest rated torque (Nm) - SF:1.66 at 55kW in the industry for 4000L-6500L Digester Tank



Lower Maintenance Cost

Cooler gearbox, longer oil life with 59L oil savings per oil change, ~USD1700 per gearbox over 10 years!

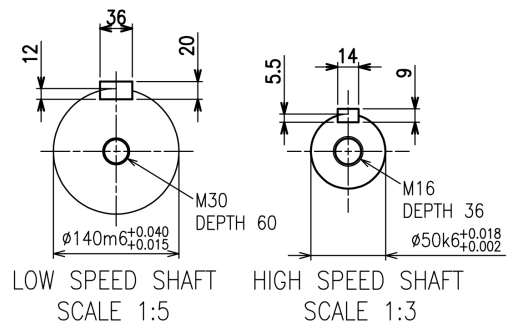
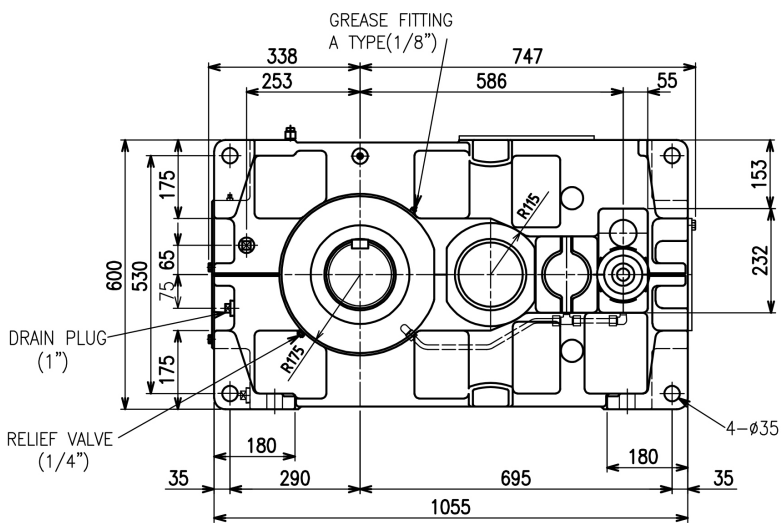
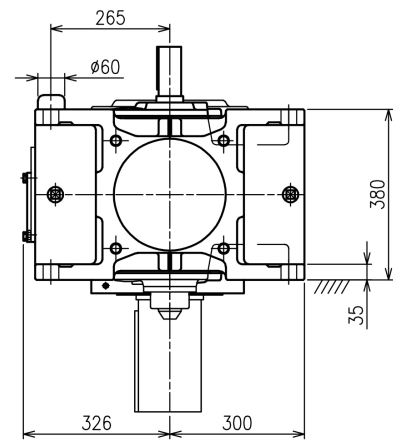
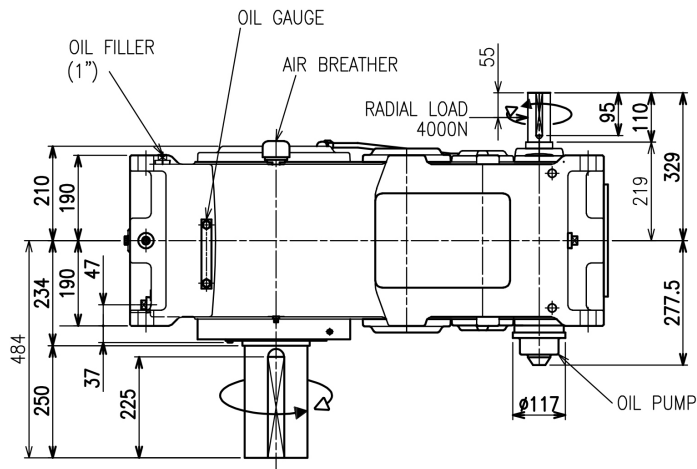
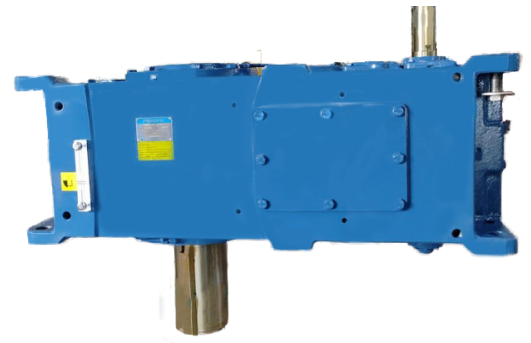


Drywell construction

Digester Drive 6000L

New

YVD065P3DG-RL-57.328



DIGESTER DRIVE 6000L REDUCER SPECIFICATIONS

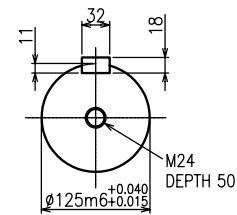
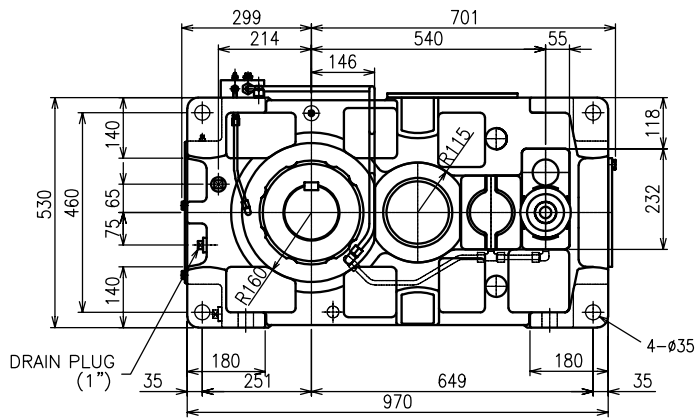
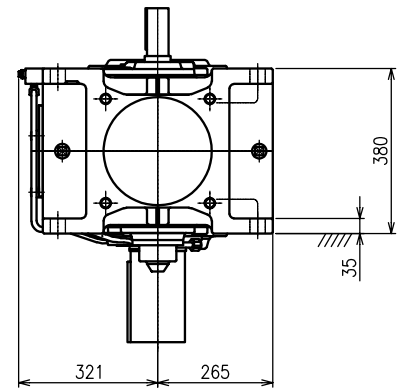
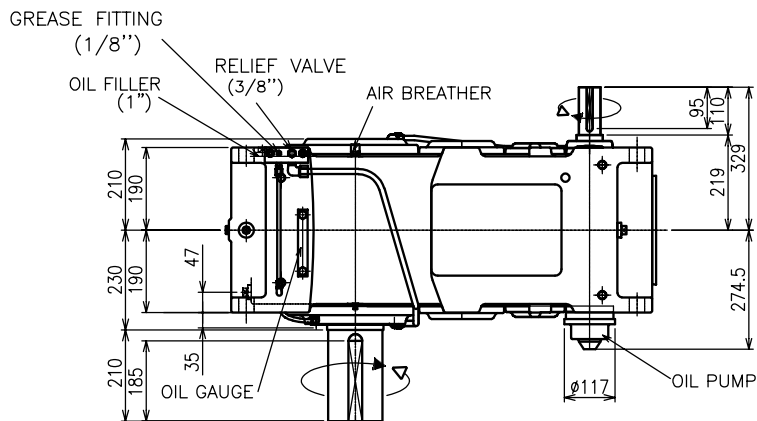
Model	Ratio	Torque Rating <i>Nm</i>	Input Speed <i>rpm</i>	Output Speed <i>rpm</i>	Power Rating <i>kW</i>	Output Shaft dia <i>mm</i>	Input Shaft dia <i>mm</i>	Weight (approx.) <i>kg</i>	Oil Qty (Approx) <i>/</i>
YVD065P3DG-RL-57.328	57.328	38,000	1500	26.7	106	140	50	815	35

Lubrication System
Lubricant

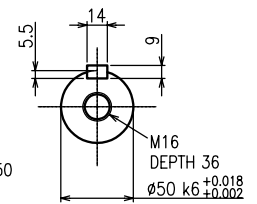
Oil
ISO VG460 AGMA 7EP

Digester Drive 4500L New

YVD060P3DW-RL-56



LOW SPEED SHAFT
SCALE 1:7.5



HIGH SPEED SHAFT
SCALE 1:4.5

DIGESTER DRIVE 4500L REDUCER SPECIFICATIONS

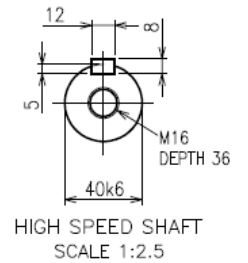
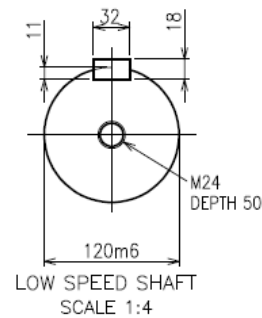
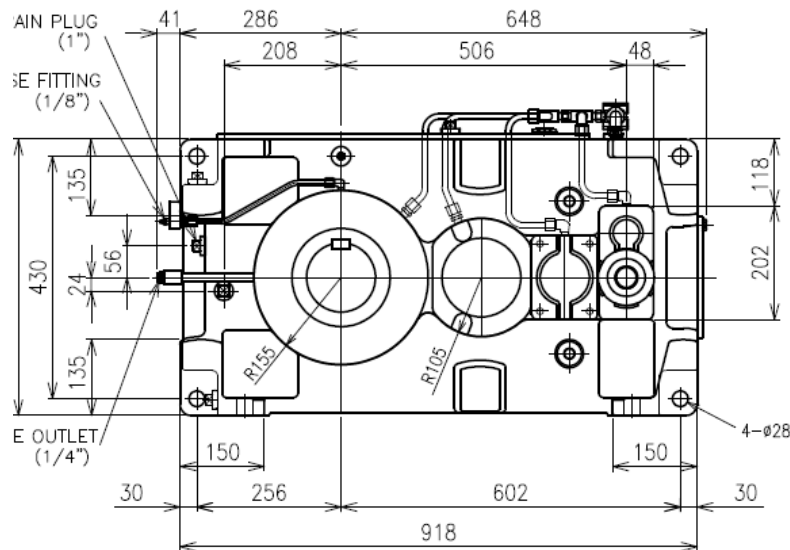
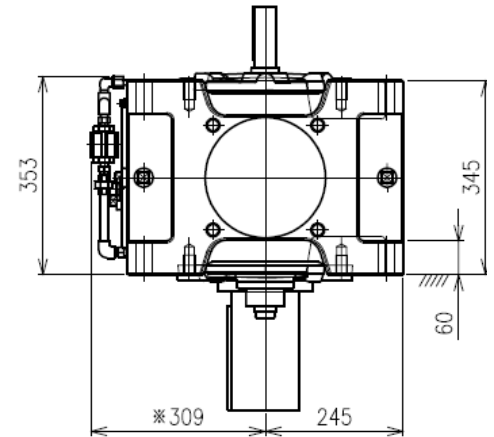
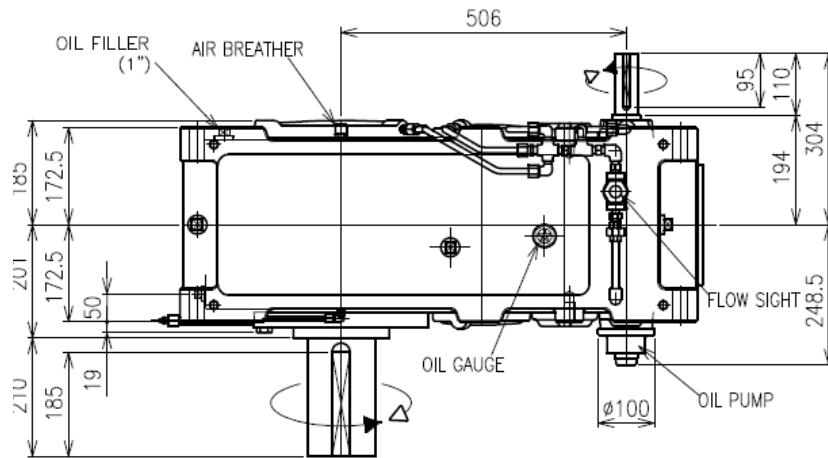
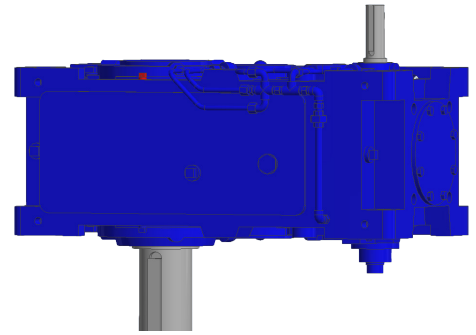
Model	Ratio	Torque Rating <i>Nm</i>	Input Speed <i>rpm</i>	Output Speed <i>rpm</i>	Power Rating <i>kW</i>	Output Shaft dia <i>mm</i>	Input Shaft dia <i>mm</i>	Weight (approx.) <i>kg</i>	Oil Qty (Approx) <i>/</i>
YVD060P3DW-RL-56	56.894	27,000	1500	26.5	71.9	125	50	680	28

Lubrication System
Lubricant

Oil
ISO VG460 AGMA 7EP

Digester Drive 3500L

YVA055P3DW-RL-56



DIGESTER DRIVE 3500L REDUCER SPECIFICATIONS

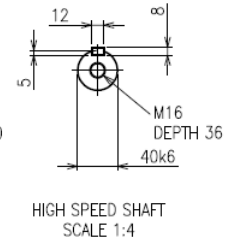
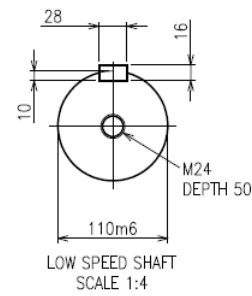
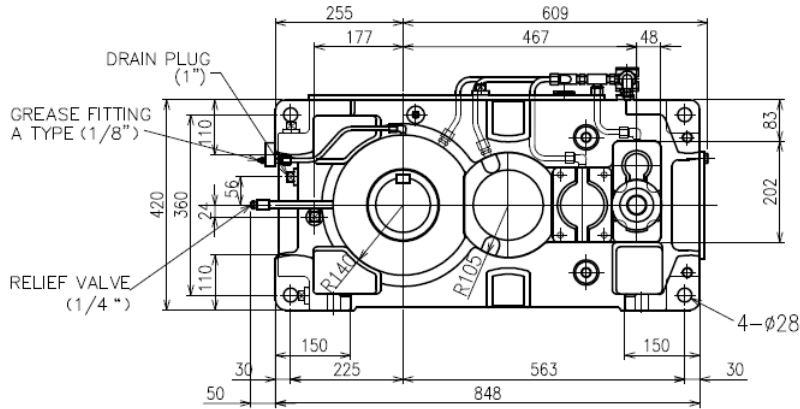
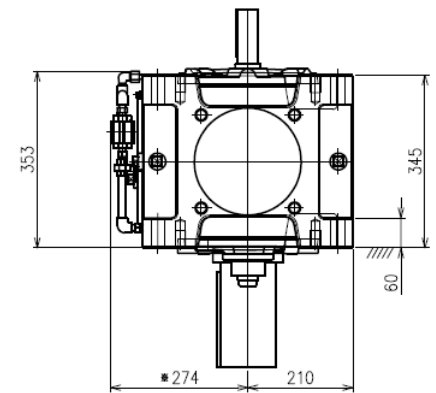
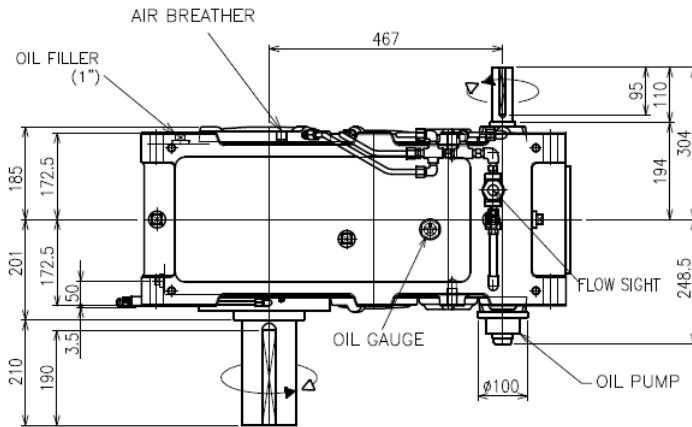
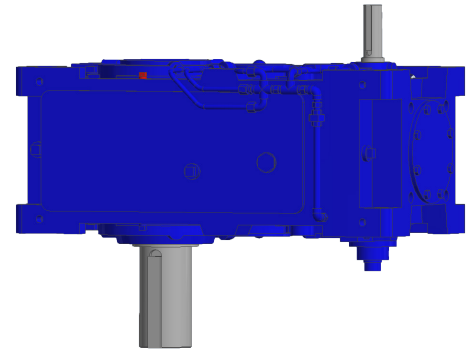
Model	Ratio	Torque Rating	Input Speed	Output Speed	Power Rating	Output Shaft dia	Input Shaft dia	Weight (approx.)	Oil Qty (Approx)
		<i>Nm</i>	<i>rpm</i>	<i>rpm</i>	<i>kW</i>	<i>mm</i>	<i>mm</i>	<i>kg</i>	<i>/</i>
YVA055P3DW-RL-56	56.608	23,000	1500	26.5	64	120	40	525	35

Lubrication System
Lubricant

Oil
ISO VG460 AGMA 7EP

Digester Drive 3000L

YVA050P3DW-RL-56



DIGESTER DRIVE 3000L REDUCER SPECIFICATIONS

Model	Ratio	Torque Rating	Input Speed	Output Speed	Power Rating	Output Shaft dia	Input Shaft dia	Weight (approx.)	Oil Qty (Approx)
		<i>Nm</i>	<i>rpm</i>	<i>rpm</i>	<i>kW</i>	<i>mm</i>	<i>mm</i>	<i>kg</i>	<i>/</i>
YVA050P3DW-RL-56	56.507	18,000	1500	26.5	50.5	110	40	470	25

Lubrication System Oil
Lubricant ISO VG460 AGMA 7EP

BUILT TO LAST



IE3 Premium Efficiency for
- High starting torque
- Energy saving



Strong cylindrical
Roller bearing for Belt
& Pulley installation

Drive end cooling
fins



Built-in Thermistor
protection. Extended
2 years warranty when
connected

Reinforced base

IE1 to IE4 Series Three-Phase Induction Cast Iron Motor
Designed to withstand harsh Palm Oil Applications

4 POLES - 1500 RPM 50Hz IE1

Type	Frame	Output (kW)	Speed (r/min)	Rated Current (A)			Efficiency %FL			Power Factor %FL			Ist/ In	Tn (N.m)	Tst/ Tn	Tmax/ Tn	J (kg.m2)	Noise dB(A)	Weight (kg)
				380V	400V	415V	100	75	50	100	75	50							
SC1A54	160L-4	15	1460	30.6	29.1	28.0	88.7	88.9	86.2	0.84	0.80	0.73	7.4	98.1	2.6	2.8	0.093	73	125
SC1A84	180M-4	18.5	1465	37.0	35.2	33.9	89.3	88.7	86.8	0.85	0.81	0.74	7.0	120.6	2.1	2.7	0.140	75	153
SC1B24	180L-4	22	1470	43.7	41.6	40.1	89.9	89.2	87.9	0.85	0.82	0.76	6.8	142.9	2.1	2.7	0.159	75	170
SC1C04	200L-4	30	1475	58.4	55.5	53.5	90.7	90.5	88.2	0.86	0.84	0.78	6.5	194.2	2.2	2.8	0.265	78	221
SC1C74	225S-4	37	1475	71.7	68.1	65.6	91.2	91.1	89.6	0.86	0.84	0.78	7.0	239.6	2.1	2.8	0.404	80	283
SC1D54	225M-4	45	1475	86.7	82.4	79.4	91.7	91.4	90.0	0.86	0.84	0.78	6.6	291.4	2.2	2.8	0.470	80	340
SC1E54	250M1-4	55	1480	105.5	100.2	96.6	92.1	92.0	91.0	0.86	0.84	0.79	6.3	354.9	2.2	2.7	0.670	82	375
SC1F74	250M2-4	75	1480	141.3	134.2	129.4	92.7	92.6	91.4	0.87	0.84	0.80	6.3	484.0	2.2	2.7	0.880	82	455
SC1F84	280S-4	75	1480	139.7	132.7	127.9	92.7	92.6	91.8	0.88	0.85	0.81	6.3	484.0	2.3	2.8	1.120	84	506
SC1F94	280M1-4	90	1485	167.1	158.7	153.0	93.0	92.7	91.8	0.88	0.85	0.81	7.1	578.8	2.6	2.8	1.460	84	590

● Ist = Locked Rotor Current ● Tst = Locked Rotor Torque ● In = Rated Current ● Tmax = Maximum Torque ● FL = Full Load ● Tn = Rated Torque

6 POLES - 1000 RPM 50Hz IE1

Type	Frame	Output (kW)	Speed (r/min)	Rated Current (A)			Efficiency %FL			Power Factor %FL			Ist/ In	Tn (N.m)	Tst/ Tn	Tmax/ Tn	J (kg.m2)	Noise dB(A)	Weight (kg)
				380V	400V	415V	100	75	50	100	75	50							
SC1A56	180L-6	15	970	33.3	31.7	30.5	87.7	87.6	85.1	0.78	0.74	0.66	6.2	147.7	2.1	2.5	0.207	72	161
SC1A86	200L1-6	18.5	975	39.2	37.2	35.9	88.6	88.2	86.3	0.81	0.78	0.68	6.2	181.2	2.0	2.8	0.315	73	193
SC1B26	200L2-6	22	975	46.3	44.0	42.4	89.2	88.9	87.8	0.81	0.78	0.70	5.9	215.5	2.0	2.5	0.360	73	211
SC1C06	225M-6	30	980	61.6	58.5	56.4	90.2	90.5	88.5	0.82	0.80	0.71	6.4	292.3	2.0	2.5	0.545	73	296
SC1C76	250M-6	37	980	73.7	70.0	67.5	90.8	91.0	89.7	0.84	0.81	0.72	6.7	360.6	2.3	2.6	0.834	76	347
SC1D56	280S-6	45	980	88.0	83.6	80.6	91.4	91.3	90.5	0.85	0.82	0.75	6.7	438.5	2.1	3.0	1.390	76	444
SC1E56	280M1-6	55	980	107.0	101.6	98.0	91.9	92.0	90.8	0.85	0.83	0.78	6.3	536.0	2.1	2.5	1.650	76	492
SC1F76	280M2-6	75	980	144.8	137.5	132.6	92.6	92.5	91.2	0.85	0.83	0.79	6.8	730.9	2.8	2.9	3.210	79	610
SC1F86	315S-6	75	985	144.8	137.5	132.6	92.6	92.3	91.5	0.85	0.83	0.80	7.0	727.2	2.0	2.7	4.100	80	795
SC1F96	315M-6	90	985	173.2	164.5	158.6	92.9	92.6	91.5	0.85	0.84	0.80	6.2	872.6	2.0	2.4	4.300	80	884

● Ist = Locked Rotor Current ● Tst = Locked Rotor Torque ● In = Rated Current ● Tmax = Maximum Torque ● FL = Full Load ● Tn = Rated Torque

SMmotor Performance Data

4 POLES - 1500 RPM 50Hz IE3

Type	Frame	Output (kW)	Speed (r/min)	Rated Current (A)			Efficiency %FL			Power Factor %FL			Ist/ In	Tn (N.m)	Tst/ Tn	Tmax/ Tn	J (kg.m ²)	Noise dB(A)	Weight (kg)
				380V	400V	415V	100	75	50	100	75	50							
SC3A54	160L-4	15	1465	28.8	27.3	26.3	92.1	92.3	89.3	0.86	0.79	0.72	7.5	97.8	2.0	2.3	0.5780	73	162
SC3A84	180M-4	18.5	1470	35.3	33.5	32.3	92.6	92.5	90.5	0.86	0.80	0.73	7.7	120.2	2.1	2.3	0.2088	75	196
SC3B24	180L-4	22	1475	41.8	39.7	38.3	93.0	92.7	91.0	0.86	0.81	0.74	7.8	142.4	2.2	2.3	0.2584	75	224
SC3C04	200L-4	30	1475	56.6	53.8	51.9	93.6	93.5	91.5	0.86	0.82	0.74	7.2	194.2	2.1	2.3	0.3685	76	260
SC3C74	225S-4	37	1480	69.6	66.1	63.7	93.9	93.6	91.8	0.86	0.83	0.75	7.3	238.8	2.2	2.4	0.6669	78	345
SC3D54	225M-4	45	1480	84.4	80.2	77.3	94.2	94.0	92.0	0.86	0.83	0.75	7.4	290.4	2.2	2.4	0.7896	78	403
SC3E54	250M-4	55	1480	102.7	97.6	94.1	94.6	94.7	92.8	0.86	0.83	0.76	7.4	354.9	2.2	2.4	1.005	79	468
SC3F84	280S-4	75	1485	136.3	129.5	124.8	95.0	94.8	93.0	0.88	0.84	0.76	6.7	482.3	2.0	2.3	1.898	80	685
SC3F94	280M-4	90	1485	163.2	155.1	149.5	95.2	95.0	93.4	0.88	0.84	0.77	6.9	578.8	2.1	2.3	2.565	80	739

● Ist = Locked Rotor Current ● Tst = Locked Rotor Torque ● In = Rated Current ● Tmax = Maximum Torque ● FL = Full Load ● Tn = Rated Torque

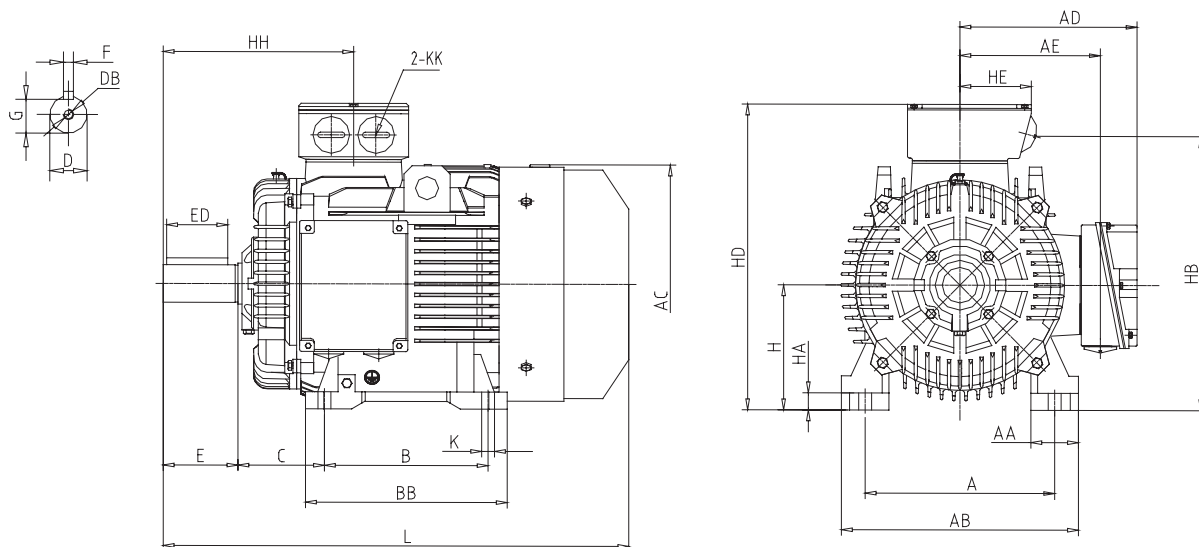
6 POLES - 1000 RPM 50Hz IE3

Type	Frame	Output (kW)	Speed (r/min)	Rated Current (A)			Efficiency %FL			Power Factor %FL			Ist/ In	Tn (N.m)	Tst/ Tn	Tmax/ Tn	J (kg.m ²)	Noise dB(A)	Weight (kg)
				380V	400V	415V	100	75	50	100	75	50							
SC3A56	180L-6	15	975	30.9	29.3	28.2	91.2	91.1	88.5	0.81	0.74	0.66	7.1	146.9	2.0	2.2	0.3561	72	230
SC3A86	200L1-6	18.5	980	37.8	36.0	34.7	91.7	91.7	89.6	0.81	0.74	0.68	7.2	180.3	2.1	2.3	0.5020	73	246
SC3B26	200L2-6	22	980	44.8	42.5	41.0	92.2	92.3	90.7	0.81	0.75	0.69	7.2	214.4	2.1	2.3	0.5740	73	278
SC3C06	225M-6	30	985	59.1	56.2	54.1	92.9	92.8	91.3	0.83	0.75	0.70	7.1	290.9	2.0	2.2	0.7256	74	344
SC3C76	250M-6	37	985	71.7	68.1	65.7	93.3	93.2	91.8	0.84	0.76	0.71	7.1	358.7	2.1	2.3	1.135	75	428
SC3D56	280S-6	45	985	85.8	81.6	78.6	93.7	93.6	92.1	0.85	0.79	0.72	7.1	436.3	2.1	2.2	2.204	78	550
SC3E56	280M-6	55	985	103.3	98.1	94.6	94.1	94.2	92.6	0.86	0.79	0.73	7.1	533.2	2.1	2.2	2.689	78	630
SC3F86	315S-6	75	990	143.4	136.2	131.3	94.6	94.5	93.2	0.84	0.80	0.74	6.7	723.5	2.0	2.3	4.145	82	895
SC3F96	315M-6	90	990	169.5	161.0	155.2	94.9	95.0	93.7	0.85	0.80	0.75	6.7	868.2	2.0	2.3	4.985	82	1002

● Ist = Locked Rotor Current ● Tst = Locked Rotor Torque ● In = Rated Current ● Tmax = Maximum Torque ● FL = Full Load ● Tn = Rated Torque

SMmotor Dimensions

160~280



FRAME	A	AA	AB	AC	AD	AE	B	BB	C	D	DB	E	ED	F	G	H	HA	HB	HD	HE	HH	K	KK	L		
160M	254	65	314	320	270	205	210	268	108	42	M16X36	110	90	12	37	160	20	365	415	95	260	14.5	M40Z1.5	625		
160L							254	312																670		
180M	279	70	349	355	285	220	241	296	121	48	M16X36	110	90	14	42.5	180	22	400	455	95	274	14.5	M40X1.5	700		
180L							279	335																400		
200L	318	72	380	405	325	255	305	366	133	55	M20X42	110	90	16	49	200	23	445	510	166	296	18.5	M50X1.5	780		
225S - 4,6,8	356	85	430	460	340	270	286	356	149	55	M20X42	140	110	18	53	225	24	507	560	166	299	18.5	M50X1.5	329	820	
225M - 2							311	381				60	140	110	18									53	329	820
225M - 4,6,8							60	140				110	18	53	329									850		
250M - 2	406	110	480	500	365	290	349	440	168	60	M20X42	140	110	18	53	250	35	560	620	185	355	24	M63X1.5	945		
250M - 4,6,8															58											
280S - 2	457	130	542	560	391	320	368	458	190	65	M20X24	140	110	18	58	280	33	600	675	185	360	24	M63X1.5	1020		
280S - 4,6,8															75										20	67.5
280M - 2							65	18		58																
280M - 4,6,8							75	20		67.5				1070												