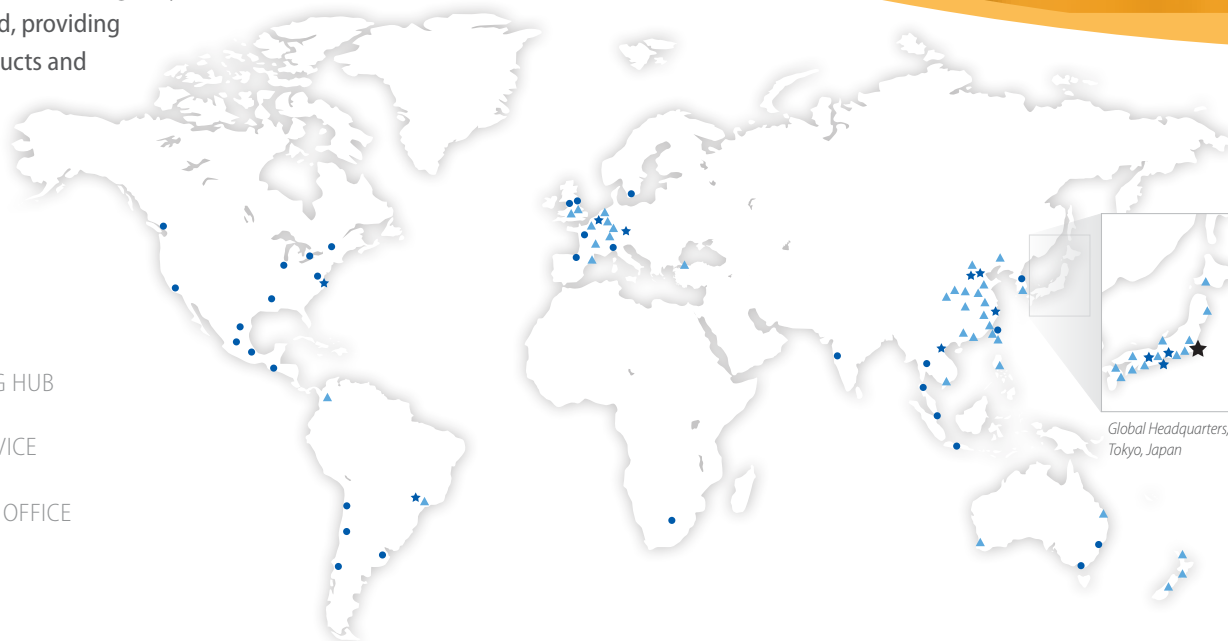




Sumitomo Drive Technologies

Sumitomo, Hansen and Seisa. Three brands, one global power transmission solutions provider. Sumitomo Drive Technologies has facilities strategically located throughout the world, providing comprehensive products and services in your region.

- ★ MANUFACTURING HUB
- ASSEMBLY & SERVICE
- ▲ REGIONAL SALES OFFICE



Global Headquarters,
Tokyo, Japan

Sumitomo (SHI) Cyclo Drive Asia Pacific Pte. Ltd.

www.SumitomoDrive.com

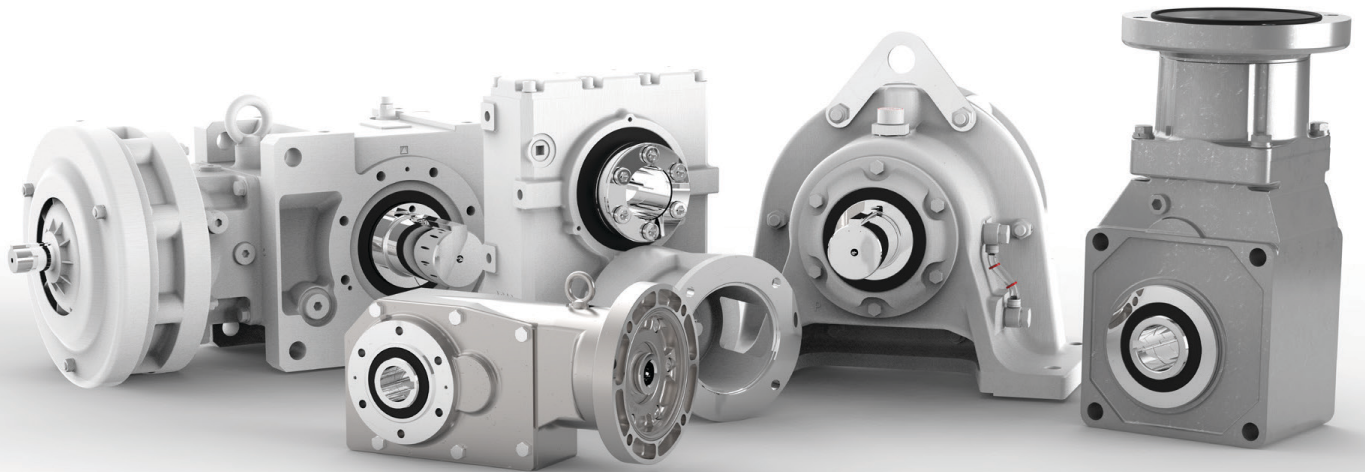
For worldwide locations, please visit www.sumitomodrive.com/worldwide
Contact your local representative at www.sumitomodrive.com/representative

SCA/AP/APFPS.01/2023.10

Sumitomo Drive Technologies



 ***Food & Beverage***



Why choose Sumitomo Drive Technologies for Food & Beverage applications?

We Know the Food & Beverage Industry

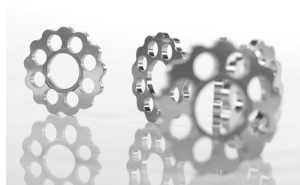
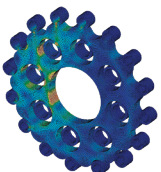
Governing sanitation bodies such as USDA, FDA, NSF, CFIA and 3-A are recommending higher levels of bacteria control and increased sanitation measures in food and beverage handling environments. With this sanitation focus, there is an industry-wide initiative to increase the chemical concentration, water temperature, and frequency that facilities are cleaning their equipment.

Given this greater focus, it is critical that all equipment utilized within a food handling facility be capable of withstanding repeated exposure without external degradation or compromise in performance. From general-purpose solutions to those geared to harsh, high-pressure washdown environments, Sumitomo has a response that will meet your most stringent demands.

Cyclo® Technology

Cycloidal “gearless” speed reduction components operate in compression, not shear.

- High ratios in a small space envelope
- 500% momentary shock load capacity
- Universal mounting arrangements



Quality Food Grade Components

We offer top of the line food grade components to accompany our speed reducers.

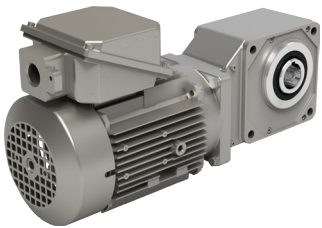
Optional Stainless Motors

- Totally enclosed stainless steel
- 100% paint free construction
- Double sealed ball bearings



We have the toughest drives that can withstand the harshest environments.

Products



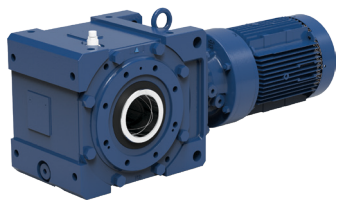
H HYPONIC®

- Universal Mounting
- Maintenance-Free
- Cool Operating



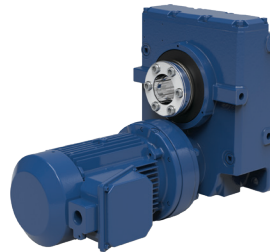
C CYCLO® 6000

- Cycloidal Technology
- Reliable Performance
- Compact Design



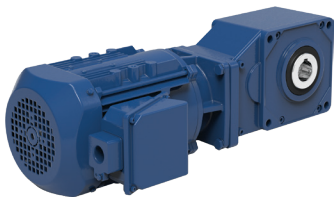
B4 CYCLO® BBB 4

- Taper-Grip® Bushing
- Compact Design
- Multiple Output Styles



HB CYCLO® HBB

- Cycloidal Technology
- Splash Lubrication
- Modular Design



BH BBB-H

- Low Reduction Ratios
- Compact Design
- Easy Grip Compatibility



F Fortress™

- Stainless Steel housing
- Maintenance-Free
- Modular Design

Maintaining high levels of sanitation and machine integrity can be challenging.

The Challenge: *Paint Failure*



Facilities are operating longer hours and under harsh conditions to keep up with the demand from consumers. Given this greater focus, it is critical that the equipment utilized within a food and beverage processing facility is capable of withstanding long-term exposure without negatively impacting the performance or condition of the equipment.

Equipment Problems:

- Paint chips due to wash down chemicals/ high pressure wash
- Compromised integrity leads to downtime
- Vulnerability to other environmental elements
- Sub-standard lubrication
- Water exposure during washdowns
- Non-food grade motor options

Conveyors



C B4 HB H F

Mixers



C B4 PX

Screw C



B4

We provide a complete package to protect your units from caustic environments.

The Solution: *Stainless Steel Option*

Sumitomo Drive Technologies provides stainless steel option for customers with long term product life. This option enables facilities to maintain the increasing sanitation levels all while preserving the integrity of the unit. Sumitomo has a response that will meet your most stringent demands.



Sumitomo Problem Solvers:

- Resistance to cleaning and sanitation compounds
- Longer product life and less unscheduled downtime
- Complete protection from dust, dirt, oils, and non-corrosives
- NSF H1 food grade lubricant, FDA 21 CFR compliant
- Food grade sealing solutions
- All stainless steel, totally enclosed motor

Conveyors



HB

Agitators



C

B4

HB

H

Overhead Conveyors



C

B4

HB

We meet the challenges that the food & beverage industry faces every day.

The Challenge: *Total Cost of Ownership*



For speed reducers, TCO is discussed in terms of initial purchase price, service life and operating cost. These factors are compiled into a rudimentary value. Often overlooked in TCO evaluation is the cost of the time to replace, the energy savings opportunity costs due to the energy wasted due to product inefficiency, and most importantly the cost of workplace injuries.

Operating Problems:

- Inefficient gearing technology
- Worm gear reducers operating at high temperatures
- Workers in close proximity of hot operating equipments
- Many burn injuries occur in the work place
- Injuries can lead to a significant amount of lost production hours, and workman compensation claims

Packaging



C B4 HB H

Filling Equipment



C B4 HB H F

Process C



C B4 H

Sumitomo has the reliable solutions to meet any demand.

The Solution: *Hyponic*

With a comprehensive understanding of TCO, including a recognition of the need to mitigate risks to all, specifically in the F&B environment, SMA developed Fortress. A cool operating stainless steel speed reducer designed to displace old inefficient worm gears.

Sumitomo Problem Solvers:

- Operates with 50% less efficiency loss
- Simultaneously operating at temperatures as much as 53% less than the average worm gear reducer
- Optimized kW per hour use
- Industry leading TCO solution
- Less lubrication oxidation and optimal oil viscosity

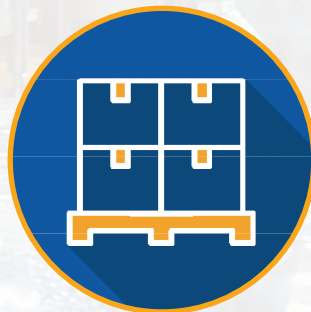


Conveyors



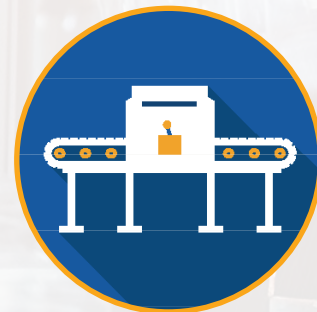
B H F

Palletizers



C B4

Process Equipment



C B4 HB F

OPTIDRIVE E3



Compliant with international standards.



GENERAL PURPOSE DRIVE

Compact, robust, and reliable general purpose drive.

Focused on ease of use, Optidrive E3 provides **unrivaled simplicity** of installation, connection, and commissioning, allowing the user to benefit from **precise motor control** and **energy savings** within minutes.

Available in **IP66/Nema 4X outdoor rating** with tough polycarbonate plastics specifically chosen to **withstand degradation** by ultraviolet (UV), greases, oils, and acids. Also, robust enough not to be brittle at -20°C (-4°F).

- 150% Overload for 60 secs
- 175% Overload for 2.5 secs
- 98% Typical Efficiency

FAST CONNECTION

5mm rising clamp terminals with captive screws.

KEYHOLE MOUNTS

QUICK REFERENCE

Integrated help card.

OPTISTICK SMART

Rapid Commissioning Tool that allows copying, backup, and the restoring of drive parameters.



DUAL ANALOG INPUTS

SPECS



POWER RATING
Up to 250 kW



POWER OPTIONS
Single-Phase: 200-240V
3-Phase: 200-600V



TORQUE
Up to 200%
(From Zero Speed)

20

• IP66

• IP66

• IP20

• IP55

• IP66

• IP66

ENCLOSURES



Non-Switched



Switched



Non-Switched



Switched



INTEGRATED DISPLAY

LED or multi-language text display.



INTEGRATED CABLE MANAGEMENT

PLUGGABLE CONTROL TERMINALS

FANS

High quality long-life fans.

OPTIDRIVE P2

HIGH PERFORMANCE DRIVE

High-performance **variable frequency drive** for standard induction and permanent magnet motors.

A **user-friendly interface** and high performance make it perfect for tackling the most demanding applications smoothly.

Extensive I/O and communications **interface capabilities** ensure the drive can be **integrated quickly and efficiently** into a wide variety of control systems.

Dedicated Hoist Mode Operation with motor holding brake control make it perfect for marine and applications.

• 200% Overload for 2.5 secs

• 98% Typical Efficiency

• Integral Brake Transistor



Our factory capabilities support all of your gearbox needs.

Why Sumitomo?

Our 400 Year Heritage

The history of the Sumitomo Group started more than 400 years ago when Masatomo Sumitomo opened a book and pharmacy store in the city of Kyoto, Japan. Today, the Sumitomo Group consists of more than 20 companies who share the Sumitomo Emblem as well as many common values and ideals.

Devoted to Quality

In addition to one of the most comprehensive product lines of any power transmission company, we offer the most reliable and highest quality products available in the industry. Whether it's product development or manufacturing processes, our Quality culture resonates through our entire global network.

Committed to our Employees and the Community

We recognize our employees are our most valuable asset. They are the driving force behind our innovative products, our ability to support our customers, and our commitment to continuous process improvement. We strive to be a valuable member of society and take pride in the contributions we make to our communities across North and South America.

Dedicated to Innovative Manufacturing

With more than a century of expertise in manufacturing, our global capabilities are unmatched in the industry. We have manufacturing and assembly facilities on every continent and continue to make investments in our manufacturing technologies to maintain our position as a leader in innovation.

The most reliable and highest quality products backed by a 400 year heritage.

Our regional network



Singapore (APAC HQ)

Engineering, Support, Inventory, and Training

Our Asia Pacific HQ in Singapore provides various engineering, training and inventory support to all subsidiaries and customers in the region. With the largest assembly and stock centre in the region, customer's requirements are attended to quickly. We also serve emerging markets countries around Asia.



Australia

Assembly, Service, Sales Office

These services are located at Glendenning, with our dedicated factory at Mackay and satellite Sales operations around the country.



Philippines

Assembly, Service, Sales Office

Strategically located at Cebu and Manila, the branches aim to be close to our customers for quick services.



Thailand

Assembly, Service, Sales Office

Efficient delivery of products, spare parts and engineering services around the kingdom from assembly plant at Chonburi, to service centre at Khon Kaen and sales office network.



Malaysia

Assembly, Service Center, Sales Office

For unique industry needs, our facilities and sales office located across the country allows for quick aftersales service to customers around the country



Indonesia

Assembly, Service, Sales Office

Established in Cikarang, together with supporting service and stock centres at Sampit and sales offices in Surabaya, Medan and Balikpapan.



Vietnam

Gearmotor Manufacturing, Sales Office, Assembly, Service

With gearmotor manufacturing in Hanoi and assembly & service facility in Ho Chi Minh, we provide quick delivery for all Vietnam customers.