

PREST® NEO **(Shaft Mount)**

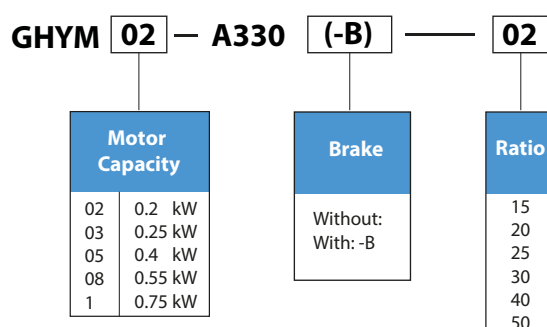


Prest®Neo (Shaft Mount)

Brilliantly designed shaft-mount gearmotors for applications with space limitation.

Maintenance-free grease lubrication and triple lip seals ensure trouble free operation.

Nomenclature



Standard Specifications

Unit	Item	3 φ Induction Motor	3 φ Induction Motor with built-in brake
Motor unit	Capacity range	0.1 kW to 0.75 kW, 4 poles	0.1 kW to 0.75 kW, 4 poles FB, brake (non-asbestos lining)
	Enclosure construction	IP55, totally enclosed fan-cooled (0.1 kW: for totally enclosed non-ventilated)	Totally enclosed fan-cooled
	Protection method		IP55
	Power supply	50 Hz: 220 ~ 240V / 380 ~ 415V 60 Hz: 230V / 440V	50 Hz: 220 ~ 240V / 380 ~ 415V 60 Hz: 230V / 440V
	Lead wires (terminal block type)	6 wires	8 wires
	Insulation class	F	
	Time rating	Continuous	
	Standards	IEC	
Gear unit	Lubrication method	Grease lubrication, filled with special high-grade grease prior to shipment.	
	Speed reduction method	Parallel shaft gear, speed reduction by involute gears.	
	Material	Casing: Aluminum alloy (cast iron for frame numbers 1500 and 1501).	
Ambient conditions	Installation site	Outdoor (Vibrations of 1G or lower)	
	Ambient temperature	-10 to 40°C Note: When installing the gear motor in an enclosure, ensure that the ambient temperature is 40°C or lower.	
	Ambient humidity	85% or lower with no dew condensation.	
	Altitude	1,000 m or lower.	
	Atmosphere	Free from gas, explosive gas or steam and Well-ventilated.	
Others	Installation angle	No limit (Out put shaft must be horizontal)	
	Painting	Painting quality: Epoxy polyester, Painting color: Munsell 5Y8/1 or equivalent (approximate value)	

Selection Table

0.2kW motor capacity

Ratio	Speed r/min		Capacity Symbol	Frame Size	Reduction Ratio	Output Torque (Tout)				Allowable Radial Load (Pro)			
	50Hz 60Hz					N·m		kgf·m		N		kgf	
	50Hz	60Hz				50Hz	60Hz	50Hz	60Hz	50Hz	60Hz	50Hz	60Hz
15	96.7	117	GHYM	A330(—B)	15	16.8	13.9	1.71	1.42	2060	1960	210	200
20	72.5	87.5			20	22.4	18.6	2.29	1.89	2260	2160	230	220
25	58.0	70.0			25	28.0	23.2	2.86	2.37	2350	2260	240	230
30	48.3	58.3			30	33.6	27.9	3.43	2.84	2450	2350	250	240
40	36.3	43.8			40	44.8	37.2	4.57	3.79	2650	2550	270	260
50	29.0	35.0			50	56.1	46.4	5.72	4.74	2840	2750	290	280

0.25kW motor capacity

Ratio	Speed r/min		Capacity Symbol	Frame Size	Reduction Ratio	Output Torque (Tout)				Allowable Radial Load (Pro)			
	50Hz 60Hz					N·m		kgf·m		N		kgf	
	50Hz	60Hz				50Hz	60Hz	50Hz	60Hz	50Hz	60Hz	50Hz	60Hz
15	96.7	117	GHYM	A330(—B)	15	21.0	17.4	2.14	1.78	2060	1960	210	200
20	72.5	87.5			20	28.0	23.2	2.86	2.37	2260	2160	230	220
25	58.0	70.0			25	35.0	29.0	3.57	2.96	2350	2260	240	230
30	48.3	58.3			30	42.0	34.8	4.29	3.55	2450	2350	250	240
40	36.3	43.8			40	56.1	46.4	5.72	4.74	2650	2550	270	260
50	29.0	35.0			50	70.1	58.1	7.14	5.92	2840	2750	290	280

0.4kW motor capacity

Ratio	Speed r/min		Capacity Symbol	Frame Size	Reduction Ratio	Output Torque (Tout)				Allowable Radial Load (Pro)			
	50Hz 60Hz					N·m		kgf·m		N		kgf	
	50Hz	60Hz				50Hz	60Hz	50Hz	60Hz	50Hz	60Hz	50Hz	60Hz
15	96.7	117	GHYM	A330(—B)	15	33.6	27.9	3.43	2.84	2060	1960	210	200
20	72.5	87.5			20	44.8	37.2	4.57	3.79	2260	2160	230	220
25	58.0	70.0			25	56.1	46.4	5.72	4.74	2350	2260	240	230
30	48.3	58.3			30	67.3	55.7	6.86	5.68	2450	2350	250	240
40	36.3	43.8			40	89.7	74.3	9.14	7.58	2650	2550	270	260
50	29.0	35.0			50	112	92.9	11.4	9.47	2840	2750	290	280

0.55kW motor capacity

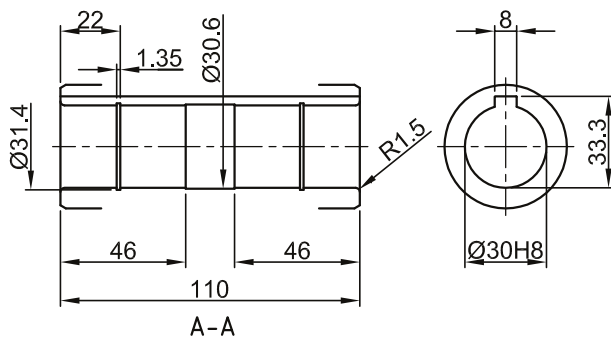
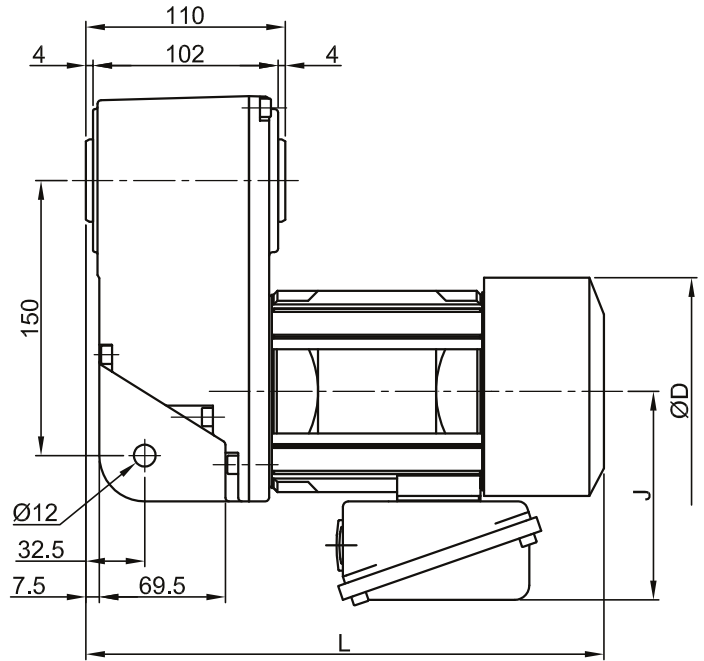
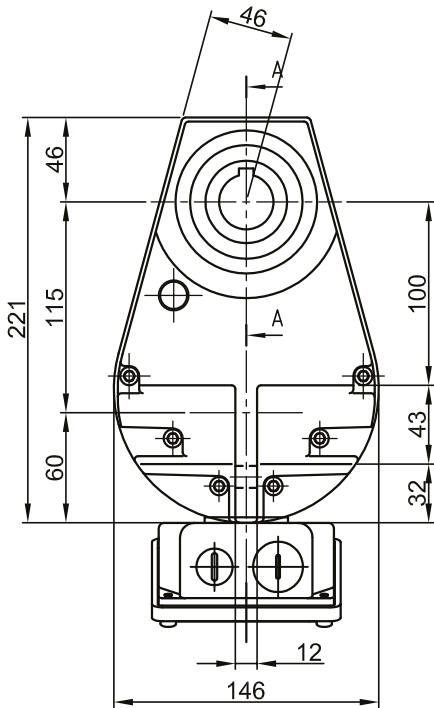
Ratio	Speed r/min		Capacity Symbol	Frame Size	Reduction Ratio	Output Torque (Tout)				Allowable Radial Load (Pro)			
	50Hz 60Hz					N·m		kgf·m		N		kgf	
	50Hz	60Hz				50Hz	60Hz	50Hz	60Hz	50Hz	60Hz	50Hz	60Hz
15	96.7	117	GHYM	A330(—B)	15	46.2	38.3	4.72	3.91	2060	1960	210	200
20	72.5	87.5			20	61.7	51.1	6.29	5.21	2260	2160	230	220
25	58.0	70.0			25	77.1	63.9	7.86	6.51	2350	2260	240	230
30	48.3	58.3			30	92.5	76.6	9.43	7.81	2450	2350	250	240
40	36.3	43.8			40	123	102	12.6	10.4	2650	2550	270	260
50	29.0	35.0			50	154	128	15.7	13.0	2840	2750	290	280

0.75kW motor capacity

Ratio	Speed r/min		Capacity Symbol	Frame Size	Reduction Ratio	Output Torque (Tout)				Allowable Radial Load (Pro)			
	50Hz 60Hz					N·m		kgf·m		N		kgf	
	50Hz	60Hz				50Hz	60Hz	50Hz	60Hz	50Hz	60Hz	50Hz	60Hz
15	96.7	117	GHYM	A330(—B)	15	63.1	52.2	6.43	5.33	2060	1960	210	200
20	72.5	87.5			20	84.1	69.7	8.57	7.10	2260	2160	230	220
25	58.0	70.0			25	105	87.1	10.7	8.88	2350	2260	240	230
30	48.3	58.3			30	126	104	12.9	10.7	2450	2350	250	240
40	36.3	43.8			40	168	139	17.1	14.2	2650	2550	270	260
50	29.0	35.0			50	210	174	21.4	17.8	2840	2750	290	280

1. Output speed (r/min.) is calculated as when motor input speed is 150r/min. (50Hz) or 1750r/min.(60Hz)
2. Allowable radial load(N) is calculated as when radial load points is on 20mm from the end of output shaft.
3. (—B) is meaning of model with brake.

Dimension Drawing



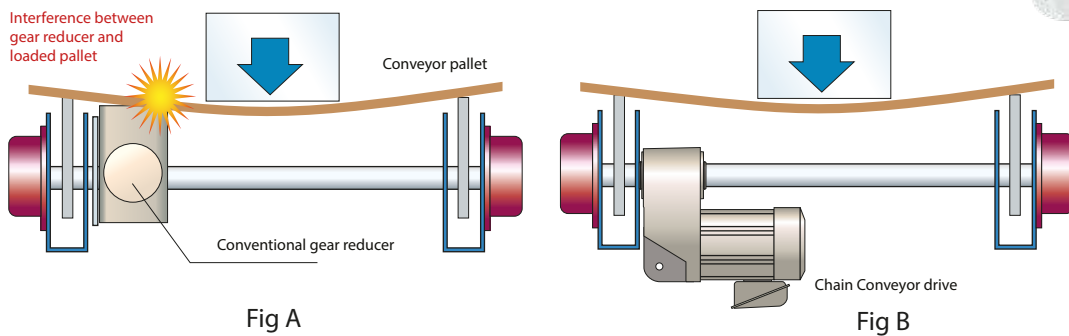
kW x P	Gearhead Weight (kg)	Motor weight (kg)		Total Weight, Std (kg)	Total Weight, Break (kg)
		Standard	Brake		
0.20 x 4P	5	5.3	6.3	10.3	11.3
0.25 x 4P	5	5.3	6.3	10.3	10.3
0.40 x 4P	5	6.7	8.7	11.7	13.7
0.55 x 4P	5	9.8	12.8	14.8	17.8
0.75 x 4P	5	9.8	12.8	14.8	17.8

1. Output shaft diameter dimensions: Dimensions tolerance in accordance with JIS B0401-1976 " H8".
2. Output shaft keyway dimensions: Dimensions tolerance in accordance with JIB B 1301-1996 Parallel key (Normal Grade).
3. Dimensions and Masses in drawings are subject to change without notice.

Feature

Conventional gear reducer could interfere with pallet when the pallet is loaded and bows (See Fig A).

Prest Neo (Shaft mount) geared motor can avoid such an interference by reducing the distance between output shaft and end of the gear reducer housing.



Universal mounting

Prest® Neo (Shaft Mount) Chain Conveyor Drive can be mounted in any way as long as output shaft is horizontal.

There is no restriction on Torque Arm Design.



Application

- Chain Conveyor
- Airport Baggage Conveyor
- Automotive Conveyor



Asia Pacific Contacts

SINGAPORE (APAC HEADQUARTERS)

Sumitomo (SHI) Cyclo Drive Asia Pacific Pte. Ltd.
Email: marketing@sumitomodrive.com.sg
15 Kwong Min Road
Singapore 628718
Tel: +65 6591 7800
Fax: +65 6863 4238

AUSTRALIA

Sumitomo (SHI) Hansen Australia Pty Ltd
Email: shau.sales@shi-g.com
Sydney (Head Office)
181 Power Street
Glendenning NSW 2761
Tel: +61 2 9208 3000
Fax: +61 2 9208 3050

Brisbane
Unit 11, 20 Archerfield Road
Darra QLD 4076, Australia
Tel: +61 7 3853 3800
Fax: +61 7 3375 1000

Melbourne
Suite 21, Waverley Business Centre
21-23 Aristoc Road
Glen Waverley VIC 3150
Tel: +61 3 9545 9500
Fax: +61 3 9587 5852

Perth
Unit 1/23 Mordaunt Circuit
Canningvale WA 6155
Tel: +61 8 9546 1766
Fax: +61 8 9546 0944

INDONESIA

PT. SM-Cyclo Indonesia
Email: marketing@sumitomodrive.com.sg
Cikarang Jalan Sungkai Blok F 25 No. 09K,
Delta Silicon 3, Lippo Cikarang, Bekasi,
Jawa Barat, Indonesia
Tel: +62 21 2961 2100
Fax: +62 21 2961 2211

VIETNAM

SM-Cyclo (Vietnam) Co., Ltd.
Email: marketing@sumitomodrive.com.sg
Factory 2B, Lot K1-2-5, Road No.2-3-5A
Le Minh Xuan Industrial Park, Binh Chanh District
Ho Chi Minh, Ho Chi Minh City, Vietnam
Tel: +84 837 663 709
Fax: +84 837 663 710

PHILIPPINES

Sumitomo (SHI) Cyclo Drive Asia Pacific Pte Ltd,
Philippines Branch Office
Email: sca.smph-enquiry@shi-g.com
B2B Granville Industrial Complex,
Carmona, Cavite 4116, Philippines
Tel: +63 2 8584 4921
Fax: +63 2 8584 4922

Cebu
Veloso Building, San Isidro Road
6045 Cebu, Philippines
Tel: +63 917 522 5037
Fax: +63 32 505 6217

MALAYSIA

SM Cyclo (Malaysia) Sdn Bhd
Email: smma.support@shi-g.com
Kuala Lumpur (Head Office)
No.7C, Jalan Anggerik Mokara 31/56,
Kota Kemuning, Seksyen 31, Selangor D.E. Malaysia
40460 Shah Alam,
Tel: +60 3 5121 0455
Fax: +60 3 5121 0578

Johor Bahru
24-02, Jalan Ros Merah 2/17, Taman Johor Jaya
81100 Johor Bahru, Johor, Malaysia
Tel/Fax: +60 7 357 2909

Penang
2945, First Floor, Jalan Prai, Taman Inderawasih
13600 Prai, Pulau Pinang, Malaysia
Tel/Fax: +60 4 390 6386

THAILAND

SM-Cyclo (Thailand) Co., Ltd
Email: thsales@smcyclo.co.th
700/542 Moo 6, Amatanakom Industrial Estate
Tambol Donhauroh, Muang, Chon Buri 20000, Thailand
Tel: +66 38 454 230
Fax: +66 38 454 235

Nakhon Ratchasima
381/49 Phollan Villa Village, Soi 11, Tambol Nai-Muang, Muang
Nakhon Ratchasima 30000, Thailand
Tel: +66 44 265 846

Bangkok
1 Empire Tower, 21st Floor Unit 2103-4,
South Sathorn Road, Yan Nawa, Bangkok 10120, Thailand
Tel: +66 2 670 0998
Fax: +66 2 670 0999

Songkhla
1/8 Soi 2 Palmspring Village 7, Moo.1 Chaichanasongkram Road
Tambol Kuanlang, Amphur Hatyai, Songkhla 90110, Thailand
Tel: +66 81 810 5387

Khonkaen
936/5 Moo.14 Tambol Sila, Amphur Muang
Khon Kaen 40000, Thailand
Tel: +66 43 465 161

Lampang
Kluaymai@Klangmuang Village, 8/27 Highway-Lampang-Ngaw
Tambol Chompoo, Amphur Muang, Lampang 52100, Thailand
Tel: +66 81 812 5669

SuratThani
89/228 Moo.5 Vibhavadi Road, Tambol Bangkung
Amphur Muang, Surat Thani 84000, Thailand
Tel: +66 77 295 615