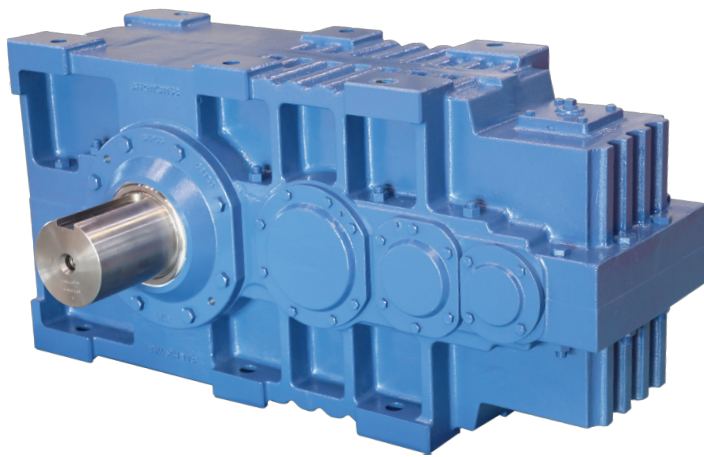


# Sumitomo Drive Technologies

## NEXT GENERATION GEARBOX for Palm Oil Industry

**NEW**

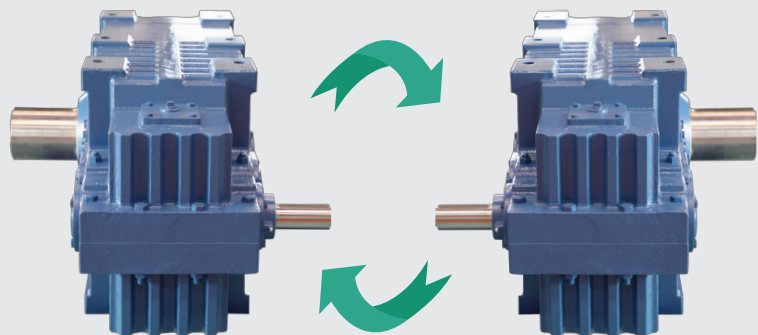


Suitable for: 75kW KCP  
90kW EFB  
110kW EFB

- Higher Capacity
- Higher Productivity
- Lower Maintenance
- Longer Lifetime

FLIPPABLE Housing design

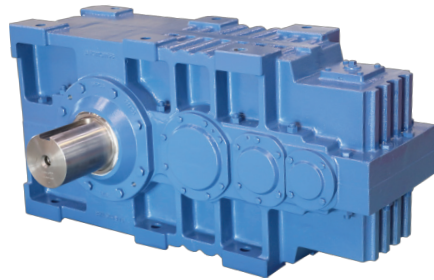
Ease in upgrading,  
interchangeable with  
our current series



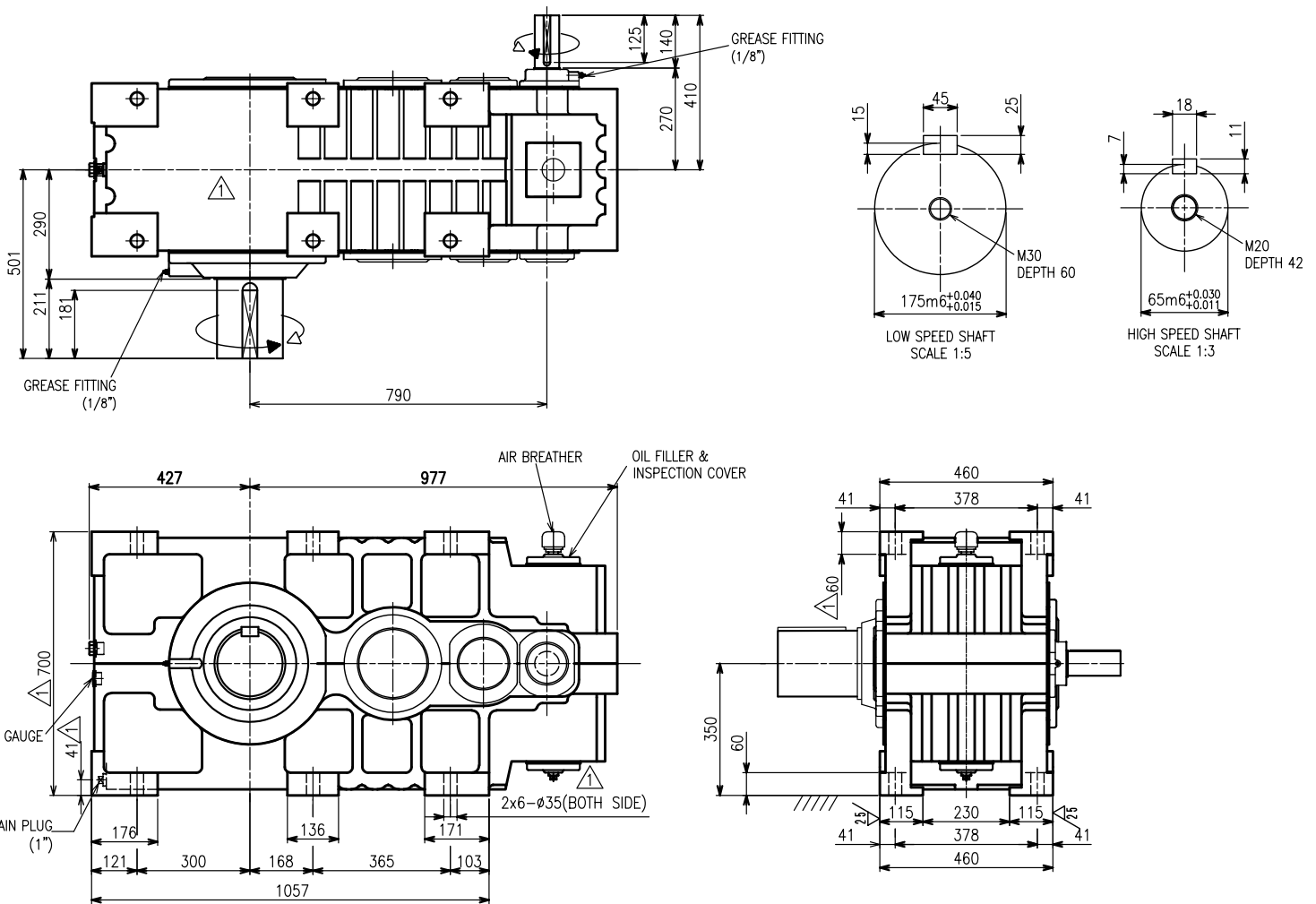
# PARAMAX® YHD Series for Palm Oil Industry

**HIGH CAPACITY**  
Empty Bunch Press  
Kernel Expeller Drive

**NEW**



YHD090P3-RL-54.642



## REDUCER SPECIFICATIONS

Model	Ratio	Torque Rating Nm	Input Speed rpm	Output Speed rpm	Power Rating kW	Output Shaft dia mm	Input Shaft Dia mm	Weight (Approx) kg	Oil (Approx) l
YHD090P3-RL-54.642	54.642	93,000	1,000	18.3	178	175	65	1,300	95
			900	16.4	159				
			765	14.0	136				

Lubrication System Oil  
Lubricant ISO VG460 AGMA 7EP