

Sumitomo Drive Technologies
Always on the Move

PREST[®] NEO
(Shaft Mount)



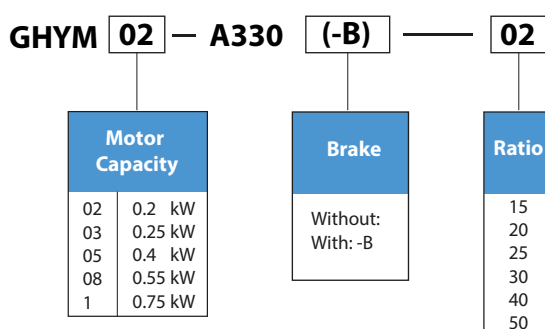
Chain Conveyor Drive

Prest®Neo (Shaft Mount)

Brilliantly designed shaft-mount gearmotors for applications with space limitation.

Maintenance-free grease lubrication and triple lip seals ensure trouble free operation.

Nomenclature



Standard Specifications

Unit	Item	3 φ Induction Motor	3 φ Induction Motor with built-in brake
Motor unit	Capacity range	0.1 kW to 0.75 kW, 4 poles	0.1 kW to 0.75 kW, 4 poles FB, brake (non-asbestos lining)
	Enclosure construction	IP55, totally enclosed fan-cooled (0.1 kW: for totally enclosed non-ventilated)	Totally enclosed fan-cooled
	Protection method		IP55
	Power supply	50 Hz: 220 ~ 240V / 380 ~ 415V 60 Hz: 230V / 440V	50 Hz: 220 ~ 240V / 380 ~ 415V 60 Hz: 230V / 440V
	Lead wires (terminal block type)	6 wires	8 wires
	Insulation class	F	
	Time rating	Continuous	
	Standards	IEC	
Gear unit	Lubrication method	Grease lubrication, filled with special high-grade grease prior to shipment.	
	Speed reduction method	Parallel shaft gear, speed reduction by involute gears.	
	Material	Casing: Aluminum alloy (cast iron for frame numbers 1500 and 1501).	
Ambient conditions	Installation site	Outdoor (Vibrations of 1G or lower)	
	Ambient temperature	-10 to 40°C Note: When installing the gear motor in an enclosure, ensure that the ambient temperature is 40°C or lower.	
	Ambient humidity	85% or lower with no dew condensation.	
	Altitude	1,000 m or lower.	
	Atmosphere	Free from gas, explosive gas or steam and Well-ventilated.	
Others	Installation angle	No limit (Out put shaft must be horizontal)	
	Painting	Painting quality: Epoxy polyester, Painting color: Munsell 5Y8/1 or equivalent (approximate value)	

Selection Table

0.2kW motor capacity

Ratio	Speed r/min		Capacity Symbol	Frame Size	Reduction Ratio	Output Torque (Tout)				Allowable Radial Load (Pro)			
	50Hz 60Hz					N·m		kgf·m		N		kgf	
	50Hz	60Hz				50Hz	60Hz	50Hz	60Hz	50Hz	60Hz	50Hz	60Hz
15	96.7	117	GHYM	A330(—B)	15	16.8	13.9	1.71	1.42	2060	1960	210	200
20	72.5	87.5			20	22.4	18.6	2.29	1.89	2260	2160	230	220
25	58.0	70.0			25	28.0	23.2	2.86	2.37	2350	2260	240	230
30	48.3	58.3			30	33.6	27.9	3.43	2.84	2450	2350	250	240
40	36.3	43.8			40	44.8	37.2	4.57	3.79	2650	2550	270	260
50	29.0	35.0			50	56.1	46.4	5.72	4.74	2840	2750	290	280

0.25kW motor capacity

Ratio	Speed r/min		Capacity Symbol	Frame Size	Reduction Ratio	Output Torque (Tout)				Allowable Radial Load (Pro)			
	50Hz 60Hz					N·m		kgf·m		N		kgf	
	50Hz	60Hz				50Hz	60Hz	50Hz	60Hz	50Hz	60Hz	50Hz	60Hz
15	96.7	117	GHYM	A330(—B)	15	21.0	17.4	2.14	1.78	2060	1960	210	200
20	72.5	87.5			20	28.0	23.2	2.86	2.37	2260	2160	230	220
25	58.0	70.0			25	35.0	29.0	3.57	2.96	2350	2260	240	230
30	48.3	58.3			30	42.0	34.8	4.29	3.55	2450	2350	250	240
40	36.3	43.8			40	56.1	46.4	5.72	4.74	2650	2550	270	260
50	29.0	35.0			50	70.1	58.1	7.14	5.92	2840	2750	290	280

0.4kW motor capacity

Ratio	Speed r/min		Capacity Symbol	Frame Size	Reduction Ratio	Output Torque (Tout)				Allowable Radial Load (Pro)			
	50Hz 60Hz					N·m		kgf·m		N		kgf	
	50Hz	60Hz				50Hz	60Hz	50Hz	60Hz	50Hz	60Hz	50Hz	60Hz
15	96.7	117	GHYM	A330(—B)	15	33.6	27.9	3.43	2.84	2060	1960	210	200
20	72.5	87.5			20	44.8	37.2	4.57	3.79	2260	2160	230	220
25	58.0	70.0			25	56.1	46.4	5.72	4.74	2350	2260	240	230
30	48.3	58.3			30	67.3	55.7	6.86	5.68	2450	2350	250	240
40	36.3	43.8			40	89.7	74.3	9.14	7.58	2650	2550	270	260
50	29.0	35.0			50	112	92.9	11.4	9.47	2840	2750	290	280

0.55kW motor capacity

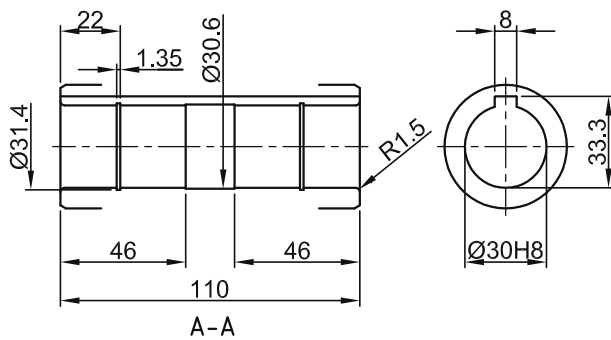
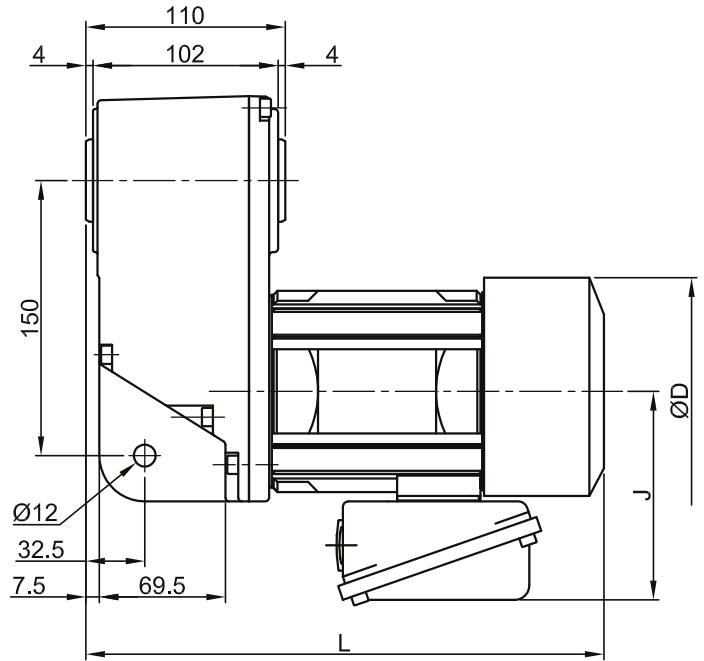
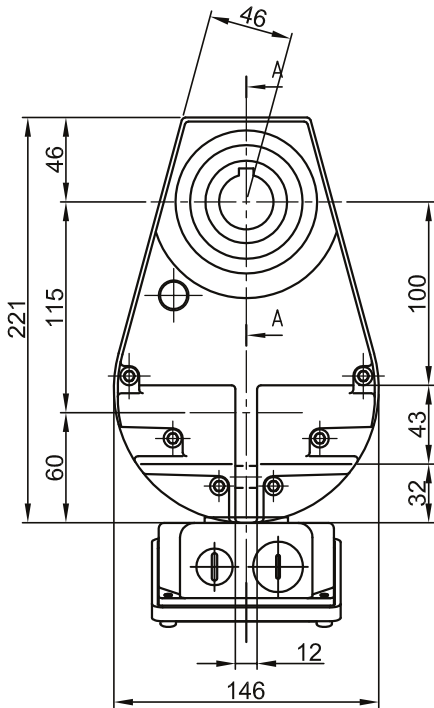
Ratio	Speed r/min		Capacity Symbol	Frame Size	Reduction Ratio	Output Torque (Tout)				Allowable Radial Load (Pro)			
	50Hz 60Hz					N·m		kgf·m		N		kgf	
	50Hz	60Hz				50Hz	60Hz	50Hz	60Hz	50Hz	60Hz	50Hz	60Hz
15	96.7	117	GHYM	A330(—B)	15	46.2	38.3	4.72	3.91	2060	1960	210	200
20	72.5	87.5			20	61.7	51.1	6.29	5.21	2260	2160	230	220
25	58.0	70.0			25	77.1	63.9	7.86	6.51	2350	2260	240	230
30	48.3	58.3			30	92.5	76.6	9.43	7.81	2450	2350	250	240
40	36.3	43.8			40	123	102	12.6	10.4	2650	2550	270	260
50	29.0	35.0			50	154	128	15.7	13.0	2840	2750	290	280

0.75kW motor capacity

Ratio	Speed r/min		Capacity Symbol	Frame Size	Reduction Ratio	Output Torque (Tout)				Allowable Radial Load (Pro)			
	50Hz 60Hz					N·m		kgf·m		N		kgf	
	50Hz	60Hz				50Hz	60Hz	50Hz	60Hz	50Hz	60Hz	50Hz	60Hz
15	96.7	117	GHYM	A330(—B)	15	63.1	52.2	6.43	5.33	2060	1960	210	200
20	72.5	87.5			20	84.1	69.7	8.57	7.10	2260	2160	230	220
25	58.0	70.0			25	105	87.1	10.7	8.88	2350	2260	240	230
30	48.3	58.3			30	126	104	12.9	10.7	2450	2350	250	240
40	36.3	43.8			40	168	139	17.1	14.2	2650	2550	270	260
50	29.0	35.0			50	210	174	21.4	17.8	2840	2750	290	280

1. Output speed (r/min.) is calculated as when motor input speed is 150r/min. (50Hz) or 1750r/min.(60Hz)
2. Allowable radial load(N) is calculated as when radial load points is on 20mm from the end of output shaft.
3. (—B) is meaning of model with brake.

Dimension Drawing



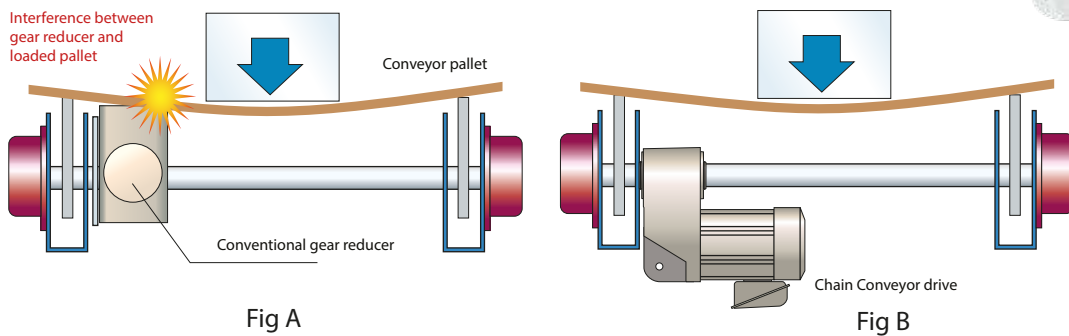
kW x P	Gearhead Weight (kg)	Motor weight (kg)		Total Weight, Std (kg)	Total Weight, Break (kg)
		Standard	Brake		
0.20 x 4P	5	5.3	6.3	10.3	11.3
0.25 x 4P	5	5.3	6.3	10.3	10.3
0.40 x 4P	5	6.7	8.7	11.7	13.7
0.55 x 4P	5	9.8	12.8	14.8	17.8
0.75 x 4P	5	9.8	12.8	14.8	17.8

1. Output shaft diameter dimensions: Dimensions tolerance in accordance with JIS B0401-1976 "H8".
2. Output shaft keyway dimensions: Dimensions tolerance in accordance with JIB B 1301-1996 Parallel key (Normal Grade).
3. Dimensions and Masses in drawings are subject to change without notice.

Feature

Conventional gear reducer could interfere with pallet when the pallet is loaded and bows (See Fig A).

Prest Neo (Shaft mount) geared motor can avoid such an interference by reducing the distance between output shaft and end of the gear reducer housing.



Universal mounting

Prest® Neo (Shaft Mount) Chain Conveyor Drive can be mounted in any way as long as output shaft is horizontal.

There is no restriction on Torque Arm Design.



Application

- Chain Conveyor
- Airport Baggage Conveyor
- Automotive Conveyor



Global Contacts

Asia Pacific

SINGAPORE

(Asia Pacific Headquarter)

Sumitomo (SHI) Cyclo Drive Asia Pacific Pte Ltd
Email: inquiry@sumitomodrive.com.sg

15 Kwong Min Road
Singapore 628718
Tel: +65 6591 7800
Fax: +65 6863 4238

AUSTRALIA

SM Cyclo of Australia Pty Ltd
Email: sales@sumitomo-drive.com.au

Sydney (Head Office)
9 Holbeche Road, Arndell Park
NSW 2148
Tel: +61 2 8811 6555
Fax: +61 2 8811 6500

Brisbane
Unit 11-20 Archerfield Road
Darra QLD 4076
Tel: +61 7 3853 3800
Fax: +61 7 3375 1600

Melbourne
61 Lakewood Boulevard,
Braeside VIC 3195
Tel: +61 3 9545 9500
Fax: +61 3 9587 5852

Perth
Unit 1/23 Mordaunt Circuit
Canningvale WA 6155
Tel: +61 8 95461766
Fax: +61 8 9546 0944

INDIA

Sumi - Cyclo Drive India
Private Limited
Email: sumicyclo@vsnl.net

Pune (India Headquarters)
Survey No. 130, Hissa No.02,
Jeevan Nagar, (Next to TVS logistics,
Off Mumbai Bangalore Bypass)
Tathawade, Pune 411 033
Tel: +91 20 6674 2900
Fax: +91 20 6674 2901

Bangalore
105, Prestige Centre Point,
Cunningham Road,
Bangalore - 560052
Tel: +91 9379377773

Chennai
No 76 (Old No C-55)
First Main Road,
Anna Nagar East,
Chennai - 600102
Tel: +91 9381858660

Delhi
Pawar House, Plot No 483,
Udyog Vihar Phase V, Gurgaon,
Haryana 122 016
Tel: +91 9312939373

Kolkata
Om Tower, Room No.612,
6th Floor, 32, J.L. Nehru Road,
(Chowringhee Road),
Kolkata - 700071
Tel: +91 33 6536 6497
Fax: +91 33 3022 5614

Mumbai
401, Nirma Plaza, Makwana Road,
Marol, Andheri (East),
Mumbai - 400059
Tel: +91 22 28563687
Fax: +91 22 28563688

INDONESIA

Sumitomo (SHI) Cyclo Drive Asia Pacific
Pte Ltd. (Indonesia Representative Office)
Email: inquiry@sumitomodrive.com.sg

Wisma GKBI, #1606,
Jl. Jend. Sudirman, no. 28
Jakarta 10210, Indonesia
Tel: +62 21 5785 3181
Fax: +62 21 5795 1210

MALAYSIA

SM Cyclo (Malaysia) Sdn Bhd
Email: smmasupport@smma.shi.co.jp

Kuala Lumpur (Head Office)
No.7C, Jalan Anggerik Mokara 31/56,
Kota Kemuning, Seksyen 31,
40460 Shah Alam, Selangor D.E. Malaysia
Tel: +60 3 5121 0455
Fax: +60 3 5121 0578

Johor Bahru
24-02, Jalan Ros Merah 2/17
Taman Johor Jaya 81100 JB, Johor
Tel/Fax: +60 7 357 2909

Penang
No. 2945, First Floor, Jalan Prai,
Taman Inderawasih, 13600 Prai,
Penang
Tel/Fax: +60 4 390 6386

PHILIPPINES

Sumitomo (SHI) Cyclo Drive Asia Pacific
Pte Ltd, Philippines Branch Office
Email: all@smph.sumitomodrive.com

B2B Granville Industrial Complex,
Carmona, Cavite 4116, Philippines
Tel: +63 2-5844921,
+63 46-4303591
+63 46-43820580 - 81
Fax: +63 46-4303592

THAILAND

SM-Cyclo of Thailand Co., Ltd.
Email: thsales@smcyclo.co.th
Bangkok (Head Office)
195 Empire Tower Unit 2103-4
21th Floor South Sathorn Road,
Yannawa, Bangkok 10120, Thailand
Tel: +66 2670 0998
Fax: +66 2670 0999

Chonburi (Branch Office)
Chonburi, 700/542 Moo 6,
Amatanakom Industrial Estate
Tel: (66) 38 454 230/1/2/3/4
Fax: (66) 38 454 235

VIETNAM

Sumitomo (SHI) Cyclo Drive Asia Pacific
Pte Ltd
Email: inquiry@sumitomodrive.com.sg

Ho Chi Minh Representative Office
10th Floor, ACB Tower
444A-446 Cach Ming Thang Tam Street,
Ward 11, Dist.3, HCMC.
Tel: +84 8 3920 4539/40
Fax: +84 8 3920 4540

Hanoi Representative Office
Room 603, 6th Floor, NOZA Building
243 Cau Giay Street
Cau Giay District, Hanoi City
Tel/Fax: +84 4 767 2470

North Asia

JAPAN

(World Headquarter)

Sumitomo Heavy Industries Ltd.
ThinkPark Tower, 1-1
Osaki 2-Chome Shinagawa-ku,
Tokyo 141-6025 Japan
Tel: +81 3 6737 2511
Fax: +81 3 6866 5160

CHINA

Sumitomo (SHI) Cyclo Drive
China, Ltd.

Shanghai (China Headquarters)
13 Floor, No.1698 Yishan Rd,
Shanghai, China 201103
Tel: +86 21 3462 7877
Fax: +86 21 3462 7922

Beijing
Room 1806, Tower C, Triumph
Center, No.170, Beiyuan Road,
Chaoyang District, Beijing, China
100101
Tel: +86 10 8485 4688
Fax: +86 10 8485 4698

Guangzhou
Room 1208, A Tower, Centre Plaza,
No.161-163, Linhe West Rd,
Guangzhou China 510620
Tel: +86 20 3828 8422
Fax: +86 20 3828 8580

HONGKONG

SM-Cyclo of Hong Kong Co., Ltd
Unit 1802, 18/F, Park Building, 476
Castle Peak Road, Kowloon,
Hong Kong
Tel: +852 2460 1881
Fax: +852 2460 1882

KOREA

Sumitomo (SHI) Cyclo Drive
Korea, Ltd
Royal Bldg. 9F Rm.913, 5
Danju-dong Chongro-ku,
Seoul, Korea 110-721
Tel: +82 2 730 0151
Fax: +82 2 730 0156

TAIWAN

Tatung SM-Cyclo Co., Ltd.
22 Chungshan N. Road.,
3rd Sec. Taipei, Taiwan 104, ROC.
Tel: +886 2 2595 7275
Fax: +886 2 2595 5594

Europe

GERMANY

(European Headquarter)

Sumitomo (SHI) Cyclo Drive
Germany, GmbH
Cyclostraße 92, 85229 Markt
Indersdorf, Germany
Tel: +49 8136 66 0
Fax: +49 8136 5771

AUSTRIA

Sumitomo (SHI) Cyclo Drive
Germany, GmbH, Austria
Branch Office
Gruentalerstraße 30A, 4020 Linz,
Austria
Tel: +43 732 330 958
Fax: +43 732 331 978

BENELUX

SM-Cyclo Benelux Office
Paseo Landabarrí nº 3, 6º B, 48940
Leioa - Vizcaya, Belgium
Tel / Fax: +32 16 60 83 11

FRANCE

SM-Cyclo France SAS
8 Avenue Christian Doppler
Arlington Techniparc, 77700 Serris,
France
Tel: +33 164 17 17 17
Fax: +33 164 17 17 18

ITALY

SM-Cyclo Italy Srl
Via dell' Artigianato 23,
20010 Cornaredo (Mi), Italy
Tel: +39 02 9356 2121
Fax: +39 02 9356 9893

SPAIN

SM-Cyclo Iberia, S.L. (SMIB)
Edificio Gobelas, C/Landabarrí, nº4
Escalera 1, 2º Izqda, Leioa 48940
Vizcaya, Spain
Tel: +34 944 805389
Fax: +34 944 801550

SWEDEN

SM-Cyclo Scandinavia AB
Ridbanegatan 4, S-21377 Malmö,
Sweden
Tel: +46 4022 0030
Fax: +46 4022 0035

UNITED KINGDOM

SM-Cyclo U.K. Ltd.
Unit 29, Bergen Way, Sutton Fields
Industrial Estate, Kingstons uopn
Hull, HU70YQ, East Yorkshire,
United Kingdom
Tel: +44 1482 790 340
Fax: +44 1482 790 321

America

USA

(American Headquarter)

Sumitomo Machinery
Corporation of America

Chesapeake (US Headquarters)
4200 Holland Blvd. Chesapeake,
VA 23323, U.S.A.
Tel: +1 757 485 3355
Fax: +1 757 485 7490

Chicago
175 West Lake Drive, Glendale
Heights,
IL 60139, U.S.A.
Tel: +1 630 752 0200
Fax: +1 630 752 0208

Los Angeles
2375 Railroad ST., Corona, CA
92880, U.S.A.
Tel: +1 951 340 4100
Fax: +1 951 340 4108

Louisville
4601 Commerce Crossing, Suite
200, Louisville, KY 40229, U.S.A.
Tel / Fax: +1 502 969 0378

ARGENTINA

SM-Cyclo de Argentina S.A.
Montes de Oca #6719,
(B1606BMG) Munro, Buenos Aires,
Argentina
Tel: +54 11 4765 5332
Fax: +54 11 4765 5517

BRAZIL

SM-Cyclo Redutores Do Brasil,
Com. Ltda.
Av. Fagundes Filho,
191 Metro Sao Judas
Edificio-Sala H123 Sao Paulo-SP
Brasil 04304-010
Tel: +55 11 5585 3600
Fax: +55 11 5585 9990

CANADA

SM-Cyclo of Canada, Ltd.
1045 South Service Road West,
Oakville, Ontario, Canada L6L 6K3
Tel: +1 905 469 1050
Fax: +1 905 469 1055

CHILE

SM-Cyclo De Chile, Ltda. (SMCH)
San Pablo N3507, Comuna de
Quinta Normal, Santiago, Chile
Tel: +56 2 892 7000
Fax: +56 2 892 7001

MEXICO

SM-Cyclo De Mexico, S.A. de C.V.
Av. Desarrollo No. 541, Parque
Industrial Finsa Guadalupe, NL,
Mexico CP 67114
Tel: +52 81 8144 5130
Fax: +52 81 8369 3699

For more on Sumitomo Drive Technologies,
visit www.sumitomodrive.com

No: SCA/AP/PNH.01/2013.03

©2013 Sumitomo (SHI) Cyclo Drive Asia Pacific Pte Ltd, Singapore